

## KILIMA CAMP

### Maasai Mara

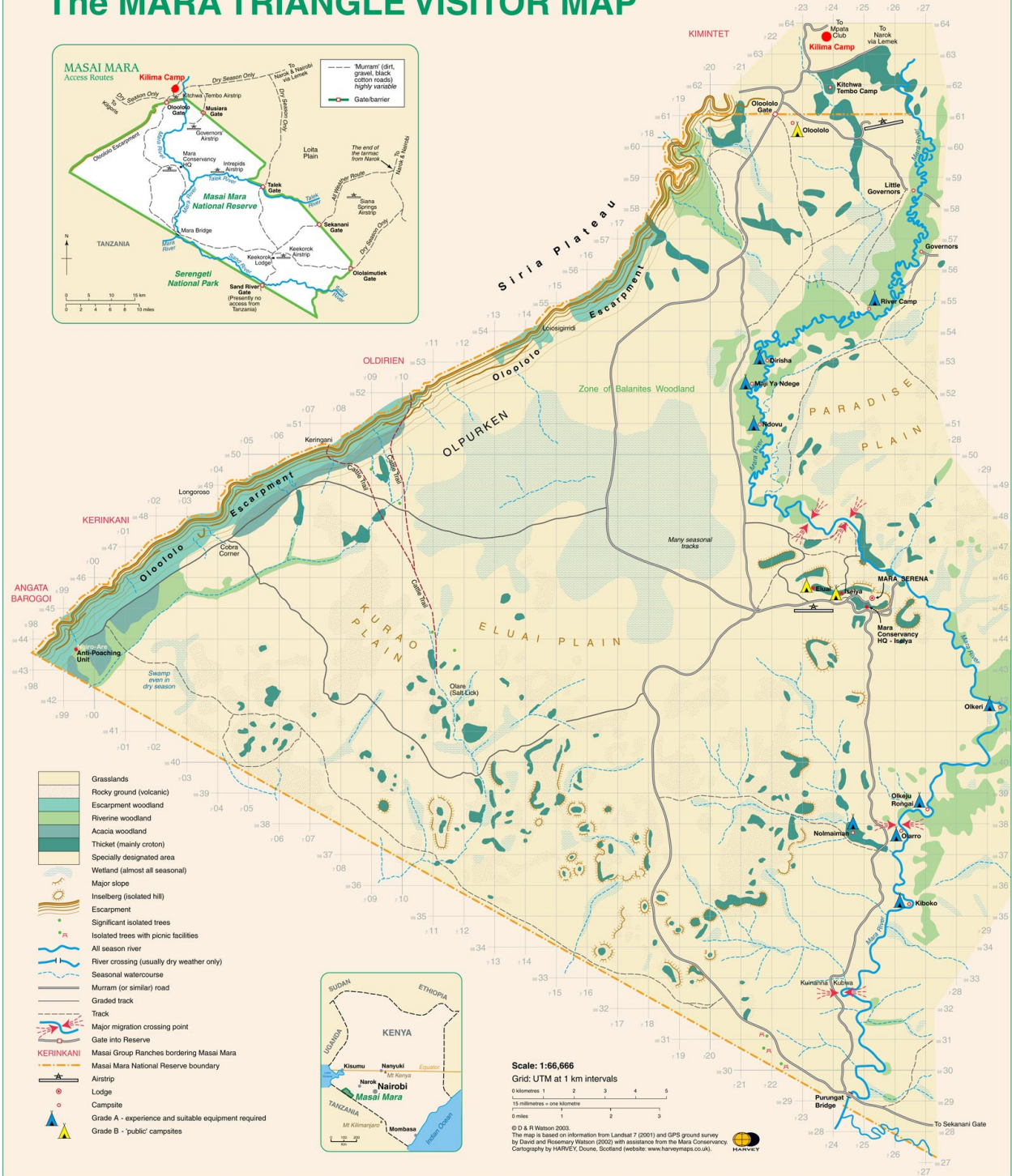
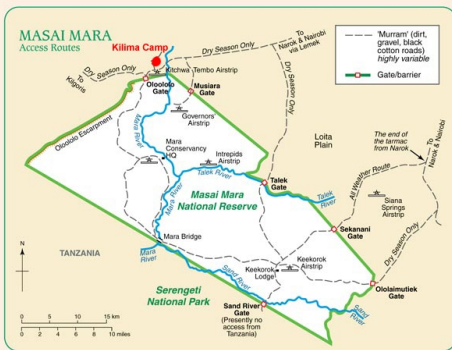
Named after its native inhabitants and the Mara river that runs throughout it, the Maasai Mara is one of Kenya's most famous reserves responsible for inspiring countless documentaries and major motion pictures that continue to capture the world's fascination with African wildlife. Every year game enthusiasts from all over the world flock to the Mara to witness the largest migration of animals on the planet as Millions of wildebeest, thousands of zebra and gazelle make their way from the Serengeti in search of fresh grazing in the Mara's grassy plains,

### Location

Nestled into the hills at the top of the Siria escarpment, Kilima Camp offers unrivalled aerial views across the Mara, allowing guests to appreciate the enormity of their surroundings. Kilima Camp's exclusive position provides a natural degree of privacy. Kilima Camp's enviable location also offers guests the chance to discover local wildlife as well as learning about Masai customs and traditions on a variety of nature walks originating from the proximity of the camp. With the entrance to the Mara reserve (Oloololo Gate) and local airstrip just a fifteen minute drive away, Kilima Camp is not only easy to reach but also the perfect base from which to explore the plains and its wildlife.



# The MARA TRIANGLE VISITOR MAP



← Prime Location as Kilima Camp's private concession touches the current boundaries / official perimeter of the *Maasai Mara National Reserve*.

GPS for Kilima Camp: 1.14.209S and 35.01.012E.

Kilima Camp is about 1800 metre above the sea level, whereas the Maasai Mara is at an altitude of 1500 to 1600 metre above the sea level.

### **Luxury**

Kilima Camp consists of twelve stylish and spacious tents, complete with their very own verandahs and en-suite bathrooms. There is a mess tent which is a spacious, central meeting point where guests gather to eat, drink, talk, play games, read, or just enjoy the view. The intimate size of the camp and the understated elegance and luxury of each tent provides guests with a comfortable and relaxing environment in which to unwind after an adventurous day on safari. Aperitifs from the bush bar followed by a refined dinner of French-influenced cuisine are served on sundown, before stories and photos of the day's sightings are exchanged over around the campfire.

Sundowner, a true Kenyan tradition, is also arranged in the middle of the bush in our private concession, not far away from Kilima Camp. Our guests enjoy our appetizers and aperitif while watching the sun come down and touch the horizon behind the hills. A peaceful moment of relaxation with the superb scenery of the Mara all around. The ideal way for finishing the day after a game drives in the Maasai Mara!

### **Environmentally-Aware**

Kilima Camp prides itself on being the only camp in the Masai Mara to be completely self-sufficient in water. \* A purpose built dam collects up to 6000m<sup>3</sup> of rainwater, which is then purified prior to reaching each individual tent where guests can enjoy a safari shower. With solar power and candles for lighting as well as an effective waste management scheme, one can be safe in the knowledge that a stay at Kilima Camp has a minimal impact on the local environment. Over eight hundred trees have been planted since its owners, whose commitment to the environment remains of paramount importance, first built the camp.



Kilima Camp is proud to announce that the Ecotourism Kenya has awarded a Bronze Medal to **Kilima Camp** performed well in most of the assessment criteria: efforts to reduce the facility's ecological footprint by design and forestation, extensive use of solar energy, water conservation and having clear benefits to the local community including supporting the cultural village.

At Kilima Camp, we do not only strive to offer our guests an unforgettable experience of the African bush thanks to our prime location in one of the best wildlife areas in the world: we also want to contribute to the conservation of the Mara Ecosystem as well as to the wellbeing of the local Maasai communities

### **Local Projects**

Kilima Camp's environmental consciousness reaches beyond the confines of the camp to the heart of the local community. Projects so far include assisting with the rehabilitation of the neighboring Maasai village, as well as paying for the salary of a teacher at the local school. Guests of Kilima Camp are encouraged to visit the village and witness the work for themselves. There is even the opportunity for children to spend a fun afternoon learning alongside local Masai children who attend the school. Such an enriching experience epitomizes Kilima Camp's ethos, offering its guests more than just a typical African safari, but an insight into deep-rooted Masai customs and tradition. After all a visit to the Mara without the Masai wouldn't be a complete experience,

### **Cuisine**

Our chef has an extensive experience managing kitchens in luxurious tented campsites. He will provide an excellent international cuisine, supplemented by a selection of fine wines.

### **Breakfast**

Usually breakfast is served in the mess tent. Our Buffet includes fruits, selection of ham and cheese, yogurts, cereals, pancakes and home baked bread. We also serve the traditional Full English Breakfast. It is possible to order coffee and tea and home made biscuits in your tent, served in your terrace.

### **Lunch & Dinner:**



Usually lunch is served in the mess tent either a la Carte, for groups smaller than ten people or we arrange a rich buffet for larger groups.

When the weather permits, dinner is served outside below the African stars. Soup of the day served at the table, then buffet with African specialties: spit roasted goat or lamb. This is a traditional meal, usually cooked by the Maasai for special event and it will be cooked in the wood fire in front of our guests. The meal is served with a selection of vegetables and sides, including Ougali, made of Manioc and African bread, the renowned Chapati, similar to the Indian bread

### **CONTACTS:**

- ← Kilima Camp Manager: + 254 (0)734 910488
- ← Ground assistance: Office in Nairobi: +254 20 2081747 / Mobile Nairobi +254 733 625 399
- ← Overseas: +33 (0) 666 52 53 57
- ← Possibility to book as well transfers and domestic flights, if needed
- ← Booking : [info@kilimacamp.com](mailto:info@kilimacamp.com)
- ← More information: [www.kilimacamp.com](http://www.kilimacamp.com)

Extra payable by Credit card at Kilima Camp (or cash: main currencies accepted: USD, EUR, GBP)

←

How to get there:

By plane: Mara airstrip Kichwa Tembo is 15 to 20 minutes away from Kilima Camp (5 daily flights from Nairobi National Airport Wilson and daily flights to Mombasa). Flight takes about 40 minutes to Nairobi.

By Road: 6 hours from Nairobi, direction depends on the weather

←

